

➤ APPLICATIONS

LOADCELL SIGNAL CONDITIONING
FULL BRIDGE STRAIN GAUGE CONDITIONING
WHEATSTONE BRIDGE AMPLIFICATION
mV SIGNALS AMPLIFICATION

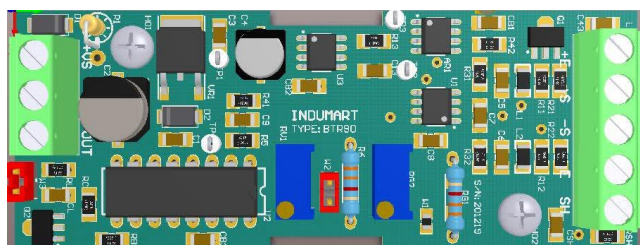


➤ INTRODUCTION

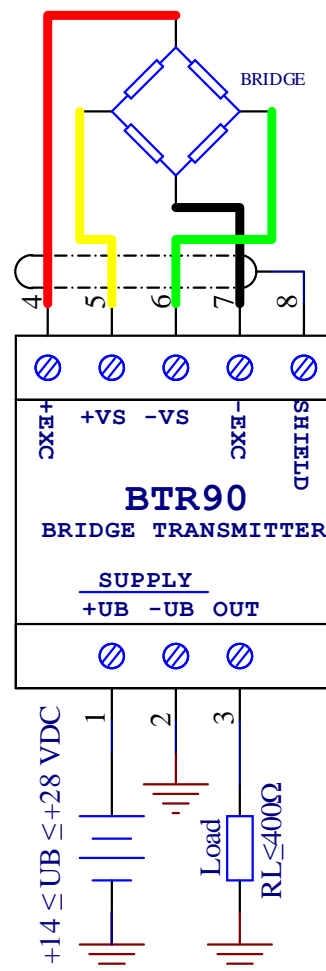
BTR90 Loadcell or millivolt bridge input transmitter is designed for use with typical 120Ω and 350Ω loadcells and strain gauges bridges. BTR90 covers not only weight, pressure and strain measurement but also has flexibility to measure millivolts inputs in range of ±20.00 millivolts. BTR90 outputs both voltage and current to variety of devices such as programmable logic controllers, analog indicators and data acquisition devices. Using BTR90 user capable to vary Gain slightly using internal potentiometers RG2 and RV1 on the PCB.

➤ SPECIFICATIONS

INPUT OUTPUT CHARACTERISTIC		
ACCURACY	0.3	% OF FULL RANGE
BANDWIDTH	1.5	KHz
EXCITATION VOLTAGE	10.00	V DC (60mA MAX)
INPUT RANGE	±20.00	mV
OUTPUT RANGE	1..5	VDC
OUTPUT CURRENT	4..20	mA
INSULATION	NONE	
GENERAL CHARACTERISTIC		
CONNECTIONS	PHOENIX 5.08 mm	
BOX MATERIAL	ABS	
INSTALLATION	RAIL MOUNTH	
INDICATOR	NONE	
POWER CONSUMPTION	≤ 2 Watt	
SUPPLY VOLTAGE	14 Volts ≤ UB ≤ 28 Volts	
THERMAL CHARACTERISTIC		
OPERATIONAL TEMP	-10 °C ≤ Θ ≤ 60 °C	
SHELF TEMP	-20 °C ≤ Θ ≤ 85 °C	



➤ WIRING DIAGRAM



Contact us

Website: <https://taha-machinery.ir>



Mobile / Messenger: +98-937-5773500

